

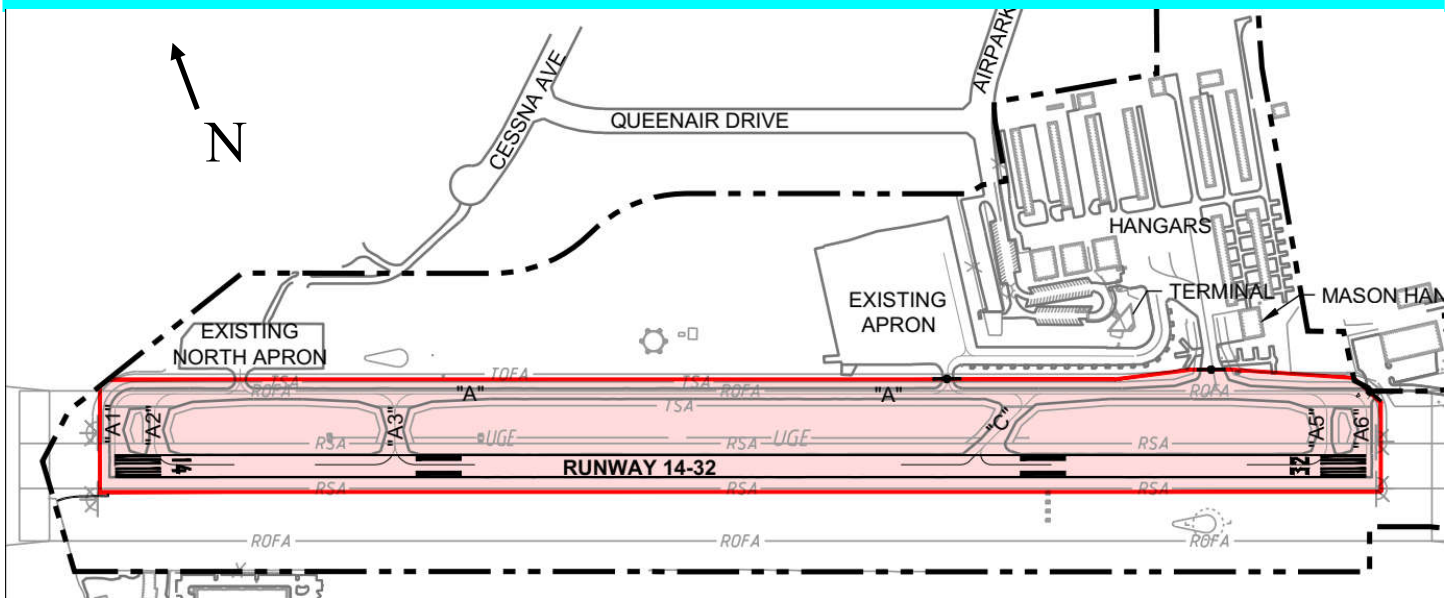
General Aviation Bulletin

from the Office of Regional Aviation Assistance

RUNWAY & TAXIWAY CLOSURE

When: 2021-AUG-25 - 2021-SEP-8

Where: Montgomery County Airpark (KGAI)



- RW 14/32 CLOSED 1900L- 0600L.
- TW's A, A1, A2, A3, A5, A6 AND C CLOSED 1900L- 0600L.

For details call Airport Management at: 301-963-7100

FLY SAFE

CHECK NOTAMS

FLY SMART

For immediate release, please post / distribute.

No. 2021-09

Issue Date: August 18, 2021