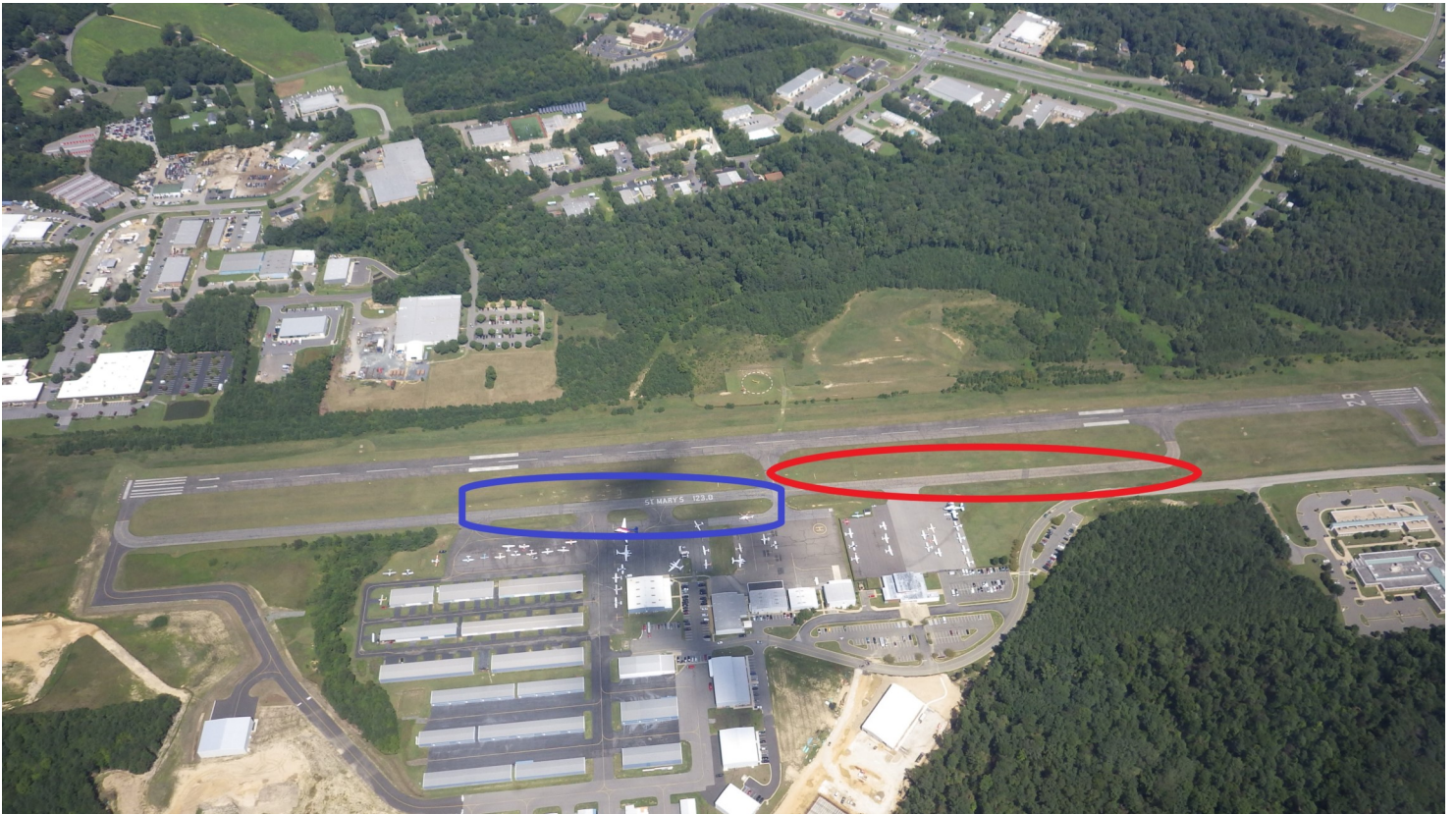


General Aviation Bulletin

from the Office of Regional Aviation Assistance

TAXIWAY CONSTRUCTION

**St. Mary's County Regional Airport
Leonardtwn, MD**



Phase 1 (in red) will begin on or about August 1, 2019. Phase 1 will continue approximately 65 days.
Phase 2 (in blue) will begin on or about October 1, 2019. Phase 2 will continue approximately 80 days.
There will be a few nightly closures to tie TWY A into the RWY.

For details call Airport: 301-475-4200 EXT 73511

CHECK ALL ASSOCIATED NOTAMS

For immediate release, please post / distribute.

No. 2019-04

Issue Date: July 10, 2019